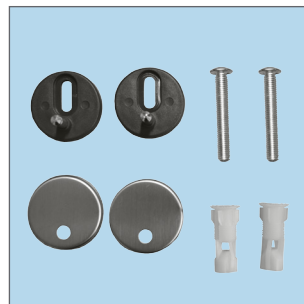
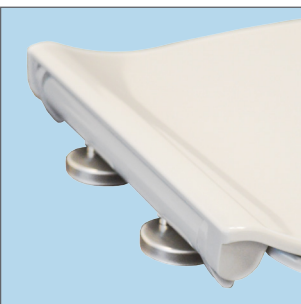


The Push n'Clean Design is developed for universal pans and features Push n'Clean for easy, hygienic cleaning. The seat releases with a light push from the top of the seat allowing it to be removed and cleaned easily. The stainless steel hinges are adjustable and include slow close.



SEAT FEATURES



Push n'Clean - the easy release system for hygienic cleaning. Simply push down and lift the seat off



Slow Close - slowly and quietly closes to prevent slamming and pinched fingers



Scratch Resistant - made from hard, Durolux® material that resists scratches



Heat Resistant - High resistance to burns and flames

- Long-lasting Durolux® thermoset plastic offers a ceramic-like shine
- Adjustable stainless steel top fix hinges
- Fits majority of manufacturers' universal shaped pans

CHARACTERISTICS

Individual seat weight: 2.2 kg

Dimensions:

- A: 410 - 460 mm
- B: 360 mm
- C: 65 - 165 mm
- D: 282 mm
- E: 216 mm

