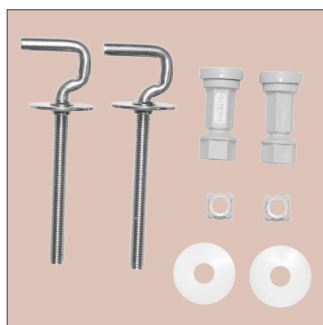
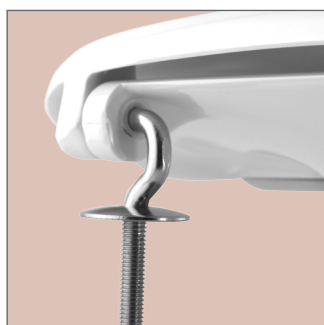


The Rimini Fixed Inox STA-TITE® is designed for universal pans and features stainless steel hinges which provide superior strength. Made from Durolux® thermoset plastic, this seat is long-lasting and offers a ceramic-like shine. This seat features STA-TITE®: the patented fixing system that always stays tight and takes the guesswork out of installation. The lower portion of the nut shears off when the proper tightness is reached, so you cannot over-tighten.



SEAT FEATURES



STA-TITE® - patented fixing system that will not loosen! Simple, "no mess" installation ensures your seat stays tight on the pan



Non-Slip Bumpers - provide extra grip so the seat stays securely on the pan



Scratch Resistant - made from hard, Durolux® material that resists scratches

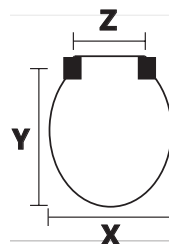


Heat Resistant - High resistance to burns and flames. Meets FAR 25.853 and ABD0031 requirements

- Long-lasting Durolux® thermoset plastic offers a ceramic-like shine
- Fixed stainless steel hook hinges
- Fits majority of manufacturers' universal shaped pans

WEIGHTS & DIMENSIONS

- Individual Seat Weight: 2.23 kg
- 5 seats per master carton



X: 373 mm

Y: 433 mm

Z: 155 mm

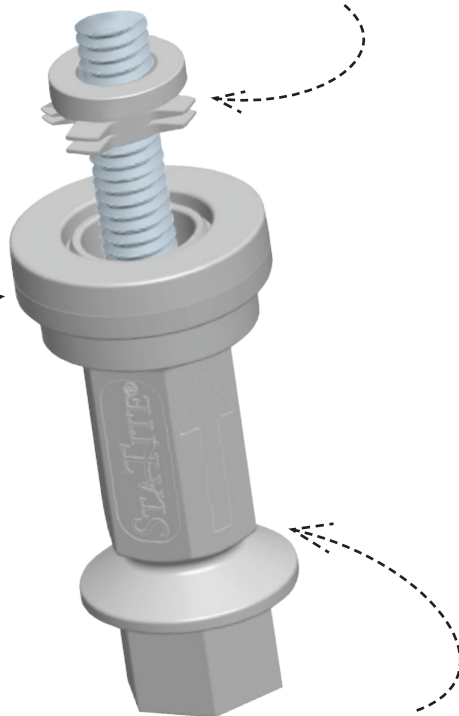
Understanding...

STA-TITE®



Are you tired of a loose toilet seat?

Unique finned
bushing prevents
shifting in toilet
pan mounting
holes



Integrated
washer provides
superior
clamping force

Nut shears off at
precise tightness every
time to lock down seat!

Easy:

One-piece integrated nut

Fast:

No hassle with glue or adhesives

Secure:

When the nuts shear off, the
seat stays tight

Effective:

This tried and tested solution will
eliminate costly call-backs for
loose toilet seats

Installation is Fast & Easy:



1) Finger Tighten



2) Tighten with Spanner



3) Snap to Secure